



ROMANS HALT,  
MILDENHALL

Carter Jonas



# ROMANS HALT, CHURCH LANE, MILDENHALL, MARLBOROUGH, WILTSHIRE, SN8 2LX

## KEY FEATURES

- Four bedrooms
- Three reception rooms
- Two bathrooms
- Kitchen / dining room
- Two-bedroom annexe
- Off road parking
- Mature garden
- Peaceful, village location

**A NEWLY RETHATCHED, FOUR BEDROOM DETACHED CHARACTER COTTAGE WITH A STUNNING SOUTH FACING GARDEN, TWO BEDROOM ANNEXE AND OFF ROAD PARKING.**



## SITUATION

Romans Halt is situated in the picturesque village of Mildenhall surrounded by stunning countryside. This quiet village, a short distance from Marlborough, is in an area of outstanding natural beauty, and provides local amenities including a nursery, thriving local thatched pub and village hall. Historic Marlborough is a market town offering many excellent local independent retailers as well as Waitrose and Tesco supermarkets and numerous quality restaurants and cafés. The leisure centre, tennis and golf clubs provide excellent sporting facilities too. From Romans Halt there are many walks including along the beautiful River Kennett, across the Marlborough Downs and into ancient Savernake Forest. Rail links can be found at Swindon and Great Bedwyn to Paddington and S.Wales. M4 connections are at Swindon and Hungerford.



## DESCRIPTION

Romans Halt, once three cottages, is a delightful Grade II listed character property of timber frame and painted brick elevations under a thatched roof and relieved by timber casement windows with diamond leading. The property has recently (February 2024) been completely rethatched and is understood to have been built in C16-C17, benefitting from an abundance of period charm and character throughout.

The house has excellent ground floor accommodation, with well-proportioned rooms throughout. Of particular note is the traditional and well-appointed kitchen/breakfast room with lovely stone flooring which benefits from an Aga and a range of built in cupboards for storage.

The spacious reception room, which has an inglenook fireplace with woodburning stove, provides a wonderful space to sit and relax and has doors leading through to the study and to the garden. Both the reception room and grand dining room offer wonderful space to entertain and enjoy a south facing aspect, giving a light and airy feel to the rear of the property. A cloakroom completes the downstairs.

Stairs lead from the reception room to the first floor where you find the substantial principal bedroom (with ensuite bathroom), which enjoys stunning views over the garden. There are two further good-sized double bedrooms, a single bedroom and a family bathroom.

## ANNEXE

The annexe offers extremely useful additional accommodation and is an ideal place for visitors to stay, given the two large double bedrooms and well-appointed bathroom. There is a large reception area provides a versatile space which could also be used as a playroom, gym or could make a wonderful home office, away from the main house. The annexe also boasts a large utility room and there is also a large loft area offering excellent extra storage space.









## OUTSIDE

There is off road parking at the end of garden accessed off Church Lane and the property sits on a plot of just under a third of an acre. The private garden is enclosed by trees and hedging and is mainly laid to lawn with colourful flower borders. It really is a gardener's paradise and there are raised beds for growing your own plants and vegetables. There's also a greenhouse and garden shed.

There is a brick paved patio area by the house perfect for alfresco dining and a path leading down to the annexe.

## SERVICES AND MATERIAL INFORMATION

- Freehold
- Grade II Listed
- Mains water, mains drainage. Gas fired central heating.
- Council tax band: G - <https://www.wiltshire.gov.uk/article/7069/Council-tax-bands-and-charges>
- Energy efficiency rating: E
- Broadband and mobile coverage. Please refer to <https://checker.ofcom.org.uk/>

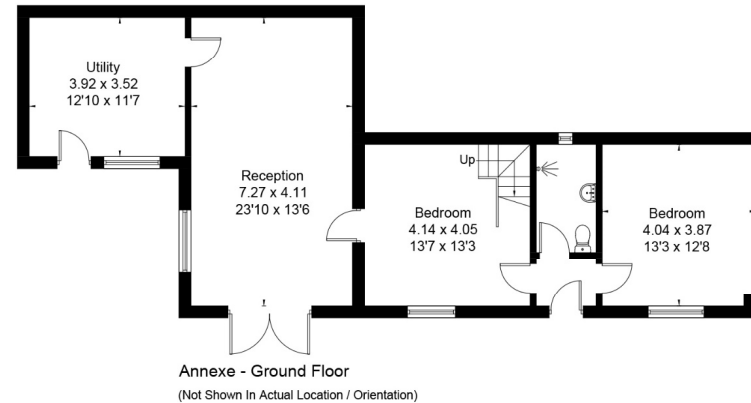
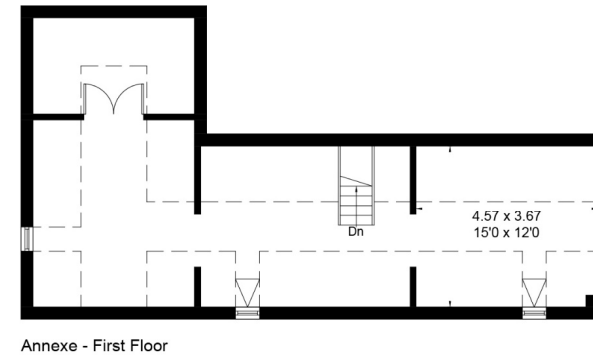
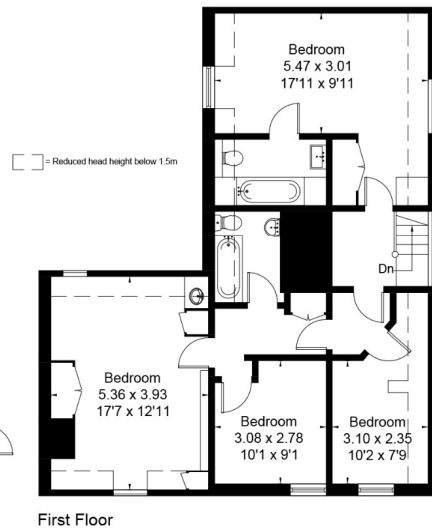
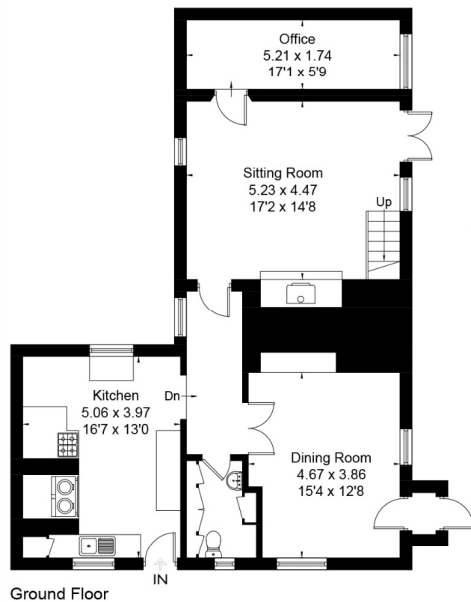
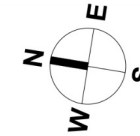
**GUIDE PRICE** £1,100,000

**VIEWING ARRANGEMENTS:** By appointment with the Marlborough Office





Romans Halt, Mildenhall, Marlborough, SN8 2LX  
 Approximate Area = 1929 sq ft / 179.2 sq m  
 Annexe = 1669 sq ft / 155.1 sq m  
 Total = 3598 sq ft / 334.3 sq m  
 Including Limited Use Area (568 sq ft / 52.8 sq m)



**Marlborough 01672 514 916**  
 93 High Street, Marlborough, SN8 1HD

**carterjonas.co.uk**  
 Offices throughout the UK

#### IMPORTANT INFORMATION

These particulars are for general information purposes only and do not represent an offer of contract or part of one. Carter Jonas has made every attempt to ensure that the particulars and other information provided are as accurate as possible and are not intended to amount to advice on which you should rely as being factually accurate. You should not assume that the property has all necessary planning, building regulations or other consents and Carter Jonas have not tested any services, facilities or equipment. Any measurements and distances given are approximate only. Purchasers must satisfy themselves of all of the aforementioned by independent inspection or otherwise. Although we make reasonable efforts to update our information, neither Carter Jonas LLP nor anyone in its employment or acting on its behalf makes any representations warranties or guarantees, whether express or implied, in relation to the property, or that the content in these particulars is accurate, complete or up to date. Our images only represent part of the property as it appeared at the time they were taken. If you require further information please contact us.

Classification L2 - Business Data