



5 CLAYPITS LANE
Foxearth, Sudbury, Suffolk

Carter Jonas

5 CLAYPITS LANE, FOXEARH, SUDBURY, SUFFOLK, CO10 7JD

- 2 miles to Long Melford
- 3 miles to Sudbury
- 14 miles to Bury St Edmunds
- 19 miles to Colchester

Entrance Porch • Sitting Room • Dining Room • Kitchen
• Downstairs Cloakroom • Study • Three Bedrooms •
Family bathroom • Driveway parking • Unusually large
rear garden •
EPC rating E

DESCRIPTION

Nestled in the picturesque village of Foxearth, this contemporary ex-local authority semi-detached house at 5 Claypits Lane presents a charming blend of comfort and practicality. This well-designed layout offers a seamless flow between its living spaces, which include a generous sitting room with sliding doors to the outside, a formal dining room and a kitchen/breakfast room. To the rear is a current playroom/study, with a downstairs cloakroom. This lends itself well to being opened to incorporate the kitchen, into a large kitchen/breakfast/living room with great views over the gardens. Upstairs, is the principal bedroom, with a further double and small double room, all served by a large family bathroom.

OUTSIDE

One of the standout features of this residence is the unexpectedly spacious west-facing gardens, providing a tranquil sanctuary for relaxation and outdoor entertaining. Perfect for enjoying the stunning Suffolk sunsets, the expansive garden complements the property's overall appeal. To the front is generous parking for two to three cars.

A WELL-PRESENTED 3/4 BEDROOM PROPERTY, ENJOYING A SEMI-RURAL LOCATION, STUNNING LARGE WEST FACING GARDENS, ALL IN A STONE'S THROW FROM THE WELL-SERVED VILLAGE OF LONG MELFORD



LOCATION

Foxearth is an attractive village situated about 2 miles to the south/west of Long Melford and surrounded by open countryside. Long Melford offers good range of day to day amenities whilst Sudbury, about 3 miles, offers further extensive facilities including a commuter rail link to London's Liverpool Street, connecting at Marks Tey onto the main line.

ADDITIONAL INFORMATION

Tenure: Freehold

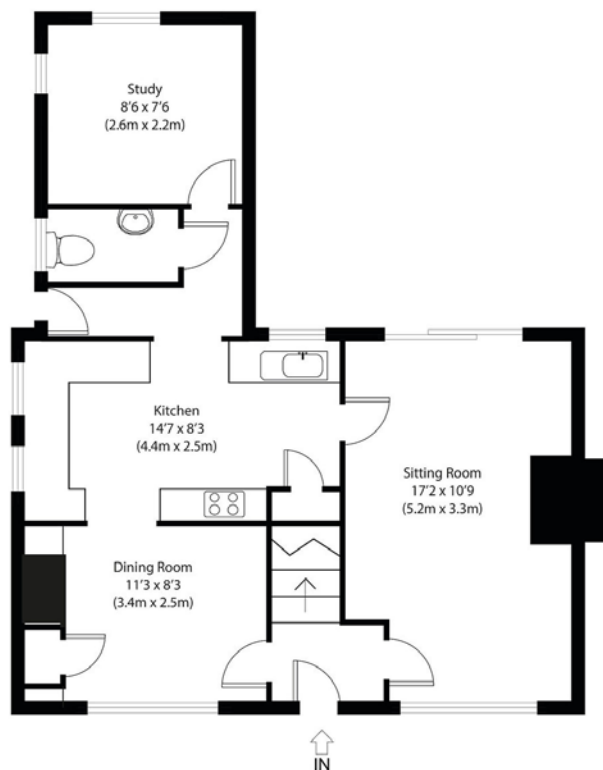
Services: Mains water, drainage and electricity. Oil fired central heating

Local Authority: Barintree Band C

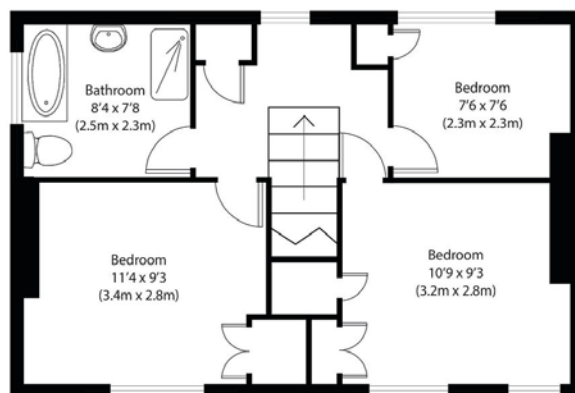
Viewings: By appointment with Carter Jonas.
Tel 01787 882881

What3Words: ///keeps.fingernails.unloads





Ground Floor



First Floor

Approximate Gross Internal Area
1010 sq ft (94 sq m)

Disclaimer: Floorplan measurements are approximate and are for illustrative purposes only. While we do not doubt the floor plan accuracy and completeness, you or your advisors should conduct a careful, independent investigation of the property in respect of monetary valuation. copyright www.ojphoto.co.uk

Carter Jonas



Long Melford 01787 882881

suffolk@carterjonas.co.uk

Little St Mary's, Long Melford, Sudbury, Suffolk, CO10 9LQ

carterjonas.co.uk

Offices throughout the UK

Exclusive UK affiliate of

CHRISTIE'S
INTERNATIONAL REAL ESTATE

IMPORTANT INFORMATION

These particulars are for general information purposes only and do not represent an offer of contract or part of one. Carter Jonas has made every attempt to ensure that the particulars and other information provided are as accurate as possible and are not intended to amount to advice on which you should rely as being factually accurate. You should not assume that the property has all necessary planning, building regulations or other consents and Carter Jonas have not tested any services, facilities or equipment. Any measurements and distances given are approximate only. Purchasers must satisfy themselves of all of the aforementioned by independent inspection or otherwise. Although we make reasonable efforts to update our information, neither Carter Jonas LLP nor anyone in its employment or acting on its behalf makes any representations warranties or guarantees, whether express or implied, in relation to the property, or that the content in these particulars is accurate, complete or up to date. Our images only represent part of the property as it appeared at the time they were taken. If you require further information please contact us.