



## **CHAFFINCHES**

North End, Little Yeldham, Essex

**Carter Jonas**



## CHAFFINCHES NORTH END, LITTLE YELDHAM, HALSTEAD, ESSEX CO9 4LG

- 1 mile to Great Yeldham
- 5 miles to Clare
- 8 miles to Halstead
- 24 miles to Stanstead

Large Entrance Hall • Study/Office • Kitchen/Breakfast  
• Utility Room • Dining Room • Sitting Room • Integral  
Garage • 4 Bedrooms • Principle Bedroom with En  
Suite • Family Bathroom • Driveway Parking • Front and  
Rear Garden •  
EPC rating D

### DESCRIPTION

Owed to recent refurbishments throughout, the property now provides immaculate accommodation throughout with a pleasing layout. The welcoming entrance hall gives access to principal reception room which has doors out to a terrace and rural views beyond. A further formal dining room and adjacent fully fitted shaker style kitchen/ breakfast room, with a further rear utility/boot room, with a door out to the gardens, a ideal home office is to the front of the property and internal access to the large garage space. Upstairs is a light galleried landing, which 4 large bedrooms pivot off from. The principal has a generous ensuite bathroom and the 3 others share a large family bathroom.

### OUTSIDE

The property sits proudly within its plot, with off street parking for two/three cars to the front, drive in access to the garaging and some formal laid lawn. To the rear, an alfresco dining terrace with further lawn, which rolls into field land behind, giving a borrowed view and great sense of space.

**A RECENTLY REFURBISHED, EXECUTIVE 4 BEDROOM FAMILY HOME, WITH RURAL VIEWS, ALL WHILST SITUATED IN A CHARMING HAMLET SETTING.**





## LOCATION

Little Yeldham is an attractive village, surrounded by open countryside. Neighbouring Great Yeldham has a wide range of amenities including shops, a doctors' surgery, a post office, restaurants, pubs and the Church of St Andrew. The nearby market towns of Halstead (6 miles) and Braintree (15 miles) provide for more extensive needs, including a mainline station to Liverpool Street and Witham (19 miles) with trains taking 60 minutes and 45 minutes respectively. The A120 provides fast access to Stansted airport.

## ADDITIONAL INFORMATION

**Tenure:** Freehold

**Services:** Mains water and electric, Oil central heating and septic tank

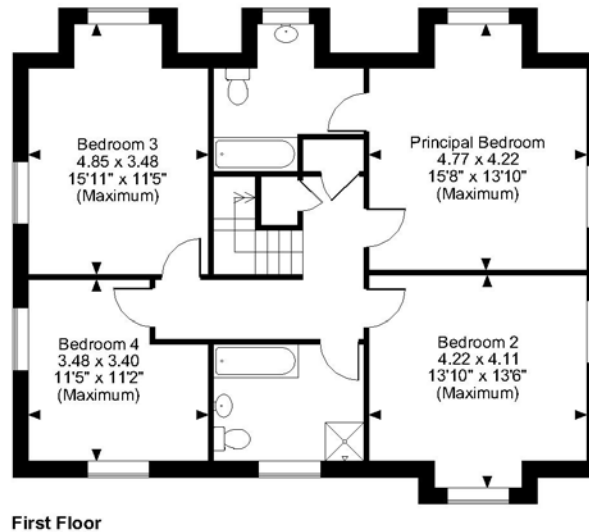
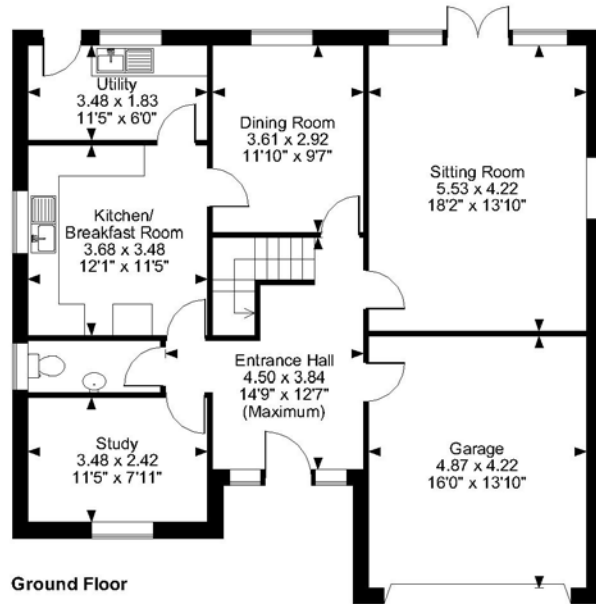
**Local Authority:** Braintree Band F

**Viewings:** By appointment with Carter Jonas.  
Tel: 01787 882881

**What3Words:** ///slowness.emotional.cubic



**Chaffinches, North End, Little Yeldham, Halstead**  
**Approximate Gross Internal Area**  
**Main House = 1,817 sq ft / 168 sq m**  
**Garage = 221 sq ft / 21 sq m**  
**Total = 2,038 sq ft / 189 sq m**



**FOR ILLUSTRATIVE PURPOSES ONLY - NOT TO SCALE**

The position & size of doors, windows, appliances and other features are approximate only.  
 © ehous. Unauthorised reproduction prohibited. Drawing ref. dig/8586456/SS



**Long Melford 01787 882881**

suffolk@carterjonas.co.uk

Little St Mary's, Long Melford, Sudbury, Suffolk CO10 9LQ

**carterjonas.co.uk**

Offices throughout the UK

*Exclusive UK affiliate of*

**CHRISTIE'S**  
 INTERNATIONAL REAL ESTATE

#### **IMPORTANT INFORMATION**

These particulars are for general information purposes only and do not represent an offer of contract or part of one. Carter Jonas has made every attempt to ensure that the particulars and other information provided are as accurate as possible and are not intended to amount to advice on which you should rely as being factually accurate. You should not assume that the property has all necessary planning, building regulations or other consents and Carter Jonas have not tested any services, facilities or equipment. Any measurements and distances given are approximate only. Purchasers must satisfy themselves of all of the aforementioned by independent inspection or otherwise. Although we make reasonable efforts to update our information, neither Carter Jonas LLP nor anyone in its employment or acting on its behalf makes any representations warranties or guarantees, whether express or implied, in relation to the property, or that the content in these particulars is accurate, complete or up to date. Our images only represent part of the property as it appeared at the time they were taken. If you require further information please contact us.