



**NEW CAVENDISH STREET, MARYLEBONE, W1G**  
**£2,500,000**

**Carter Jonas**

# NEW CAVENDISH STREET, MARYLEBONE, W1G

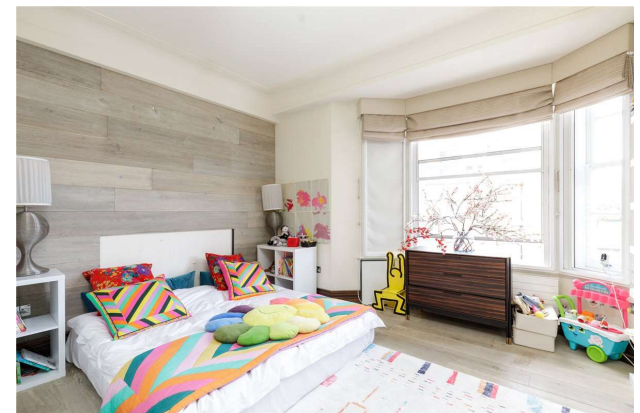


## AMENITIES

**TENURE** To be advised

**LOCAL AUTHORITY**

**EPC BAND** To be confirmed





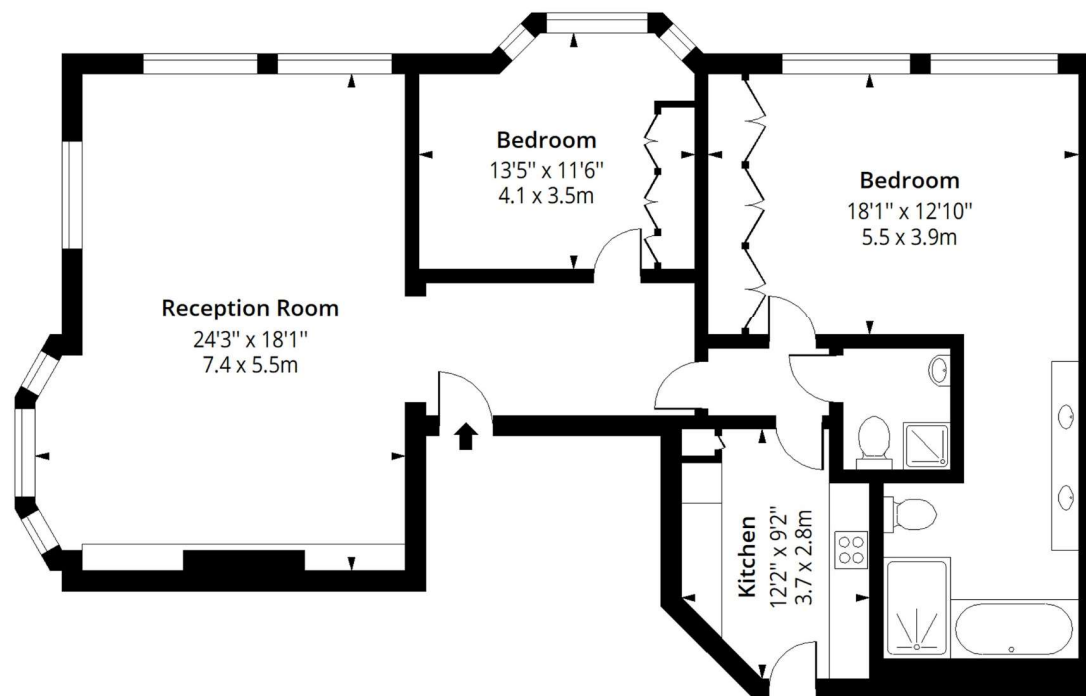






# New Cavendish Street, W1G

Approx. Gross Internal Area 1195 Sq Ft - 111.02 Sq M



## Third Floor

Floor Area 1195 Sq Ft - 111.02 Sq M



Measured according to RICS IPMS2. Floor plan is for illustrative purposes only and is not to scale. Every attempt has been made to ensure the accuracy of the floor plan shown, however all measurements, fixtures, fittings and data shown are an approximate interpretation for illustrative purposes only. 1 sq m = 10.76 sq feet.

lpaplus.com

Date: 27/6/202<sup>3</sup>

Marylebone 020 7486 8866

marylebone@carterjonas.co.uk  
37 New Cavendish Street, Marylebone, London, W1G 9TL

carterjonas.co.uk  
Offices throughout the UK

*Exclusive UK affiliate of*  
**CHRISTIE'S**  
INTERNATIONAL REAL ESTATE

### IMPORTANT INFORMATION

These particulars are for general information purposes only and do not represent an offer of contract or part of one. Carter Jonas has made every attempt to ensure that the particulars and other information provided are as accurate as possible and are not intended to amount to advice on which you should rely as being factually accurate. You should not assume that the property has all necessary planning, building regulations or other consents and Carter Jonas have not tested any services, facilities or equipment. Any measurements and distances given are approximate only. Purchasers must satisfy themselves of all of the aforementioned by independent inspection or otherwise. Although we make reasonable efforts to update our information, neither Carter Jonas LLP nor anyone in its employment or acting on its behalf makes any representations warranties or guarantees, whether express or implied, in relation to the property, or that the content in these particulars is accurate, complete or up to date. Our images only represent part of the property as it appeared at the time they were taken. If you require further information please contact us.

Classification L2 - Business Data