



**CROWN SQUARE, LONDON, SE1**  
£900 per week\*

**Carter Jonas**



---

## APT 2, HANOVER HOUSE, CROWN SQUARE, LONDON, SE1

- Furnished
- 1 Bedroom
- Open plan kitchen / reception room
- 1 Bathroom
- 1 Guest cloakroom

### LOCATION

Southwark, in common with much of the south bank of the Thames is generally an area of mixed development. Located within easy walking distance of the City and the West End of London it has become a major business centre with many national and international corporations situated alongside residential developments, shops, restaurants, galleries and bars. The Shard skyscraper Tate Modern art gallery, Imperial War Museum, Shakespeare's Globe Theatre, and Borough Market are but a few of the attractions located within the borough.

### THE PROPERTY

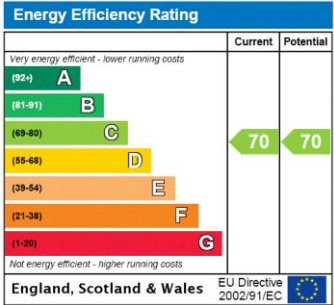
A one-bedroom apartment of approximately 825 square feet, situated on the second floor of this new development Designed by the award winning architects, Darling Associates. Located minutes' walk from the banks of the River Thames and Tower Bridge where there are unrivalled views of the Tower of London, the apartment has been finished to the highest specification including Miele kitchen appliances, under floor heating, comfort cooling and home automated system for lighting and blind control. The apartment also benefits from 24h concierge, swimming pool, sauna and gym.

Nearest Tube: Waterloo / Tower Hill





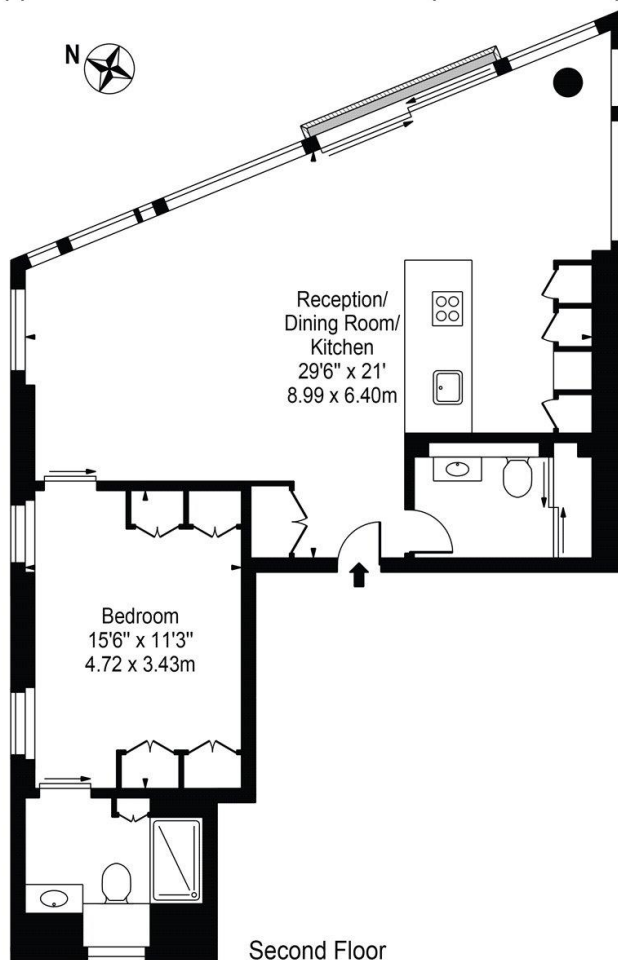
ADDITIONAL INFORMATION	
Offers	Available for a minimum term of 12 months longer terms will be considered
Viewing	Strictly by appointment
Local Authority	Southwark County Council - Council Tax Band E
Deposit Required £5,400	





# Hanover House

Approx. Gross Internal Area 825 Sq Ft - 76.65 Sq M



For Illustration Purposes Only - Not To Scale

This floor plan should be used as a general outline for guidance only and does not constitute in whole or in part an offer or contract.  
Any intending purchaser or lessee should satisfy themselves by inspection, searches, enquiries and full survey as to the correctness of each statement.  
Any areas, measurements or distances quoted are approximate and should not be used to value a property or be the basis of any sale or let.

**T: 020 7493 0676**

18 Davies Street, London, W1K 3DS

E: [mayfair@carterjonas.co.uk](mailto:mayfair@carterjonas.co.uk)

*Exclusive UK affiliate of*  
**CHRISTIE'S**  
INTERNATIONAL REAL ESTATE

**carterjonas.co.uk**  
Offices throughout the UK

A member of  
**onTheMarket.com**  
Classification L2 - Business Data



## IMPORTANT INFORMATION

Our property particulars do not represent an offer or contract, or part of one. The information given is without responsibility on the part of the agents, seller(s) or lessor(s) and you should not rely on the information as being factually accurate about the property, its condition or its value. Neither Carter Jonas LLP nor anyone in its employment or acting on its behalf has authority to make any representation or warranty in relation to this property. We have not carried out a detailed survey, nor tested the services, appliances or fittings at the property. The images shown may only represent part of the property and are as they appeared at the time of being photographed. The areas, measurements and distances are approximate only. Any reference to alterations or use does not mean that any necessary planning permission, building regulation or other consent has been obtained. The VAT position relating to the property may change without notice.