



**ST. CHRISTOPHER'S PLACE, MARYLEBONE, W1U**  
£750 per week\*

**Carter Jonas**



# **FLAT 41 GREENGARDEN HOUSE, ST. CHRISTOPHER'S PLACE, MARYLEBONE, LONDON, W1U 1NL**

- 1 Reception Room
- Fully Equipped Kitchen
- 1 Bedroom
- Study
- 2 Bathrooms
- Upper Floor with Lift
- Furnished
- Utility bills & Broadband (excluding Council Tax & TV Licence) included in the rent.

## **THE PROPERTY**

A spacious fully furnished lateral apartment with private entrance, comprising of a double bedroom with air conditioning, an air-conditioned study with a day bed and a desk, a reception room with dining area and two bathrooms with power showers.

The apartment also boasts a fully equipped kitchen that contains a washer/dryer, under the counter fridge with freezer compartment, a hob, oven and microwave.

The apartment has double glazing throughout, 24-hour hot water and heating and benefits from onsite property management and lift access.

Full rent is £750 per week inclusive of gas, water, electric and broadband.

Available for long term rental on a furnished basis.

Holding deposit is 1 week's rent = £750 (at asking price)

Security deposit is 5 week's rent = £3,750 (at asking price £750pw)

Minimum term 12 months.

Council Tax Band G

Spacious & homely furnished apartment, with one bedroom and a study, stylishly decorated to a high standard. Full rent is £750 per week inclusive of gas, water, electric and broadband. In a prime location close to Oxford Street.



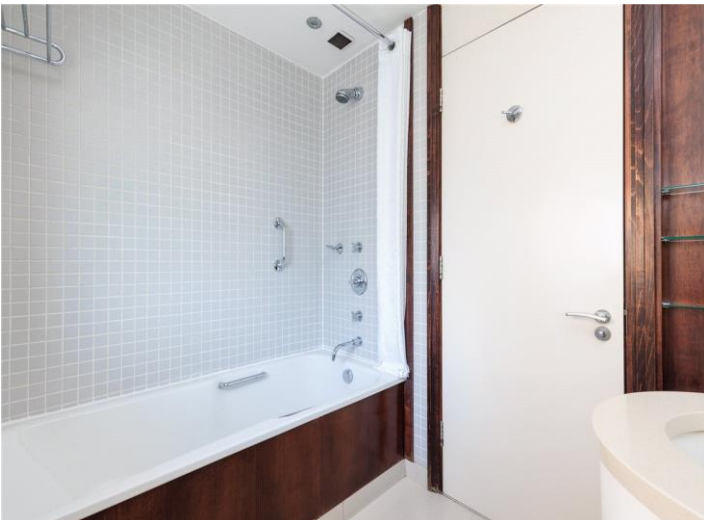
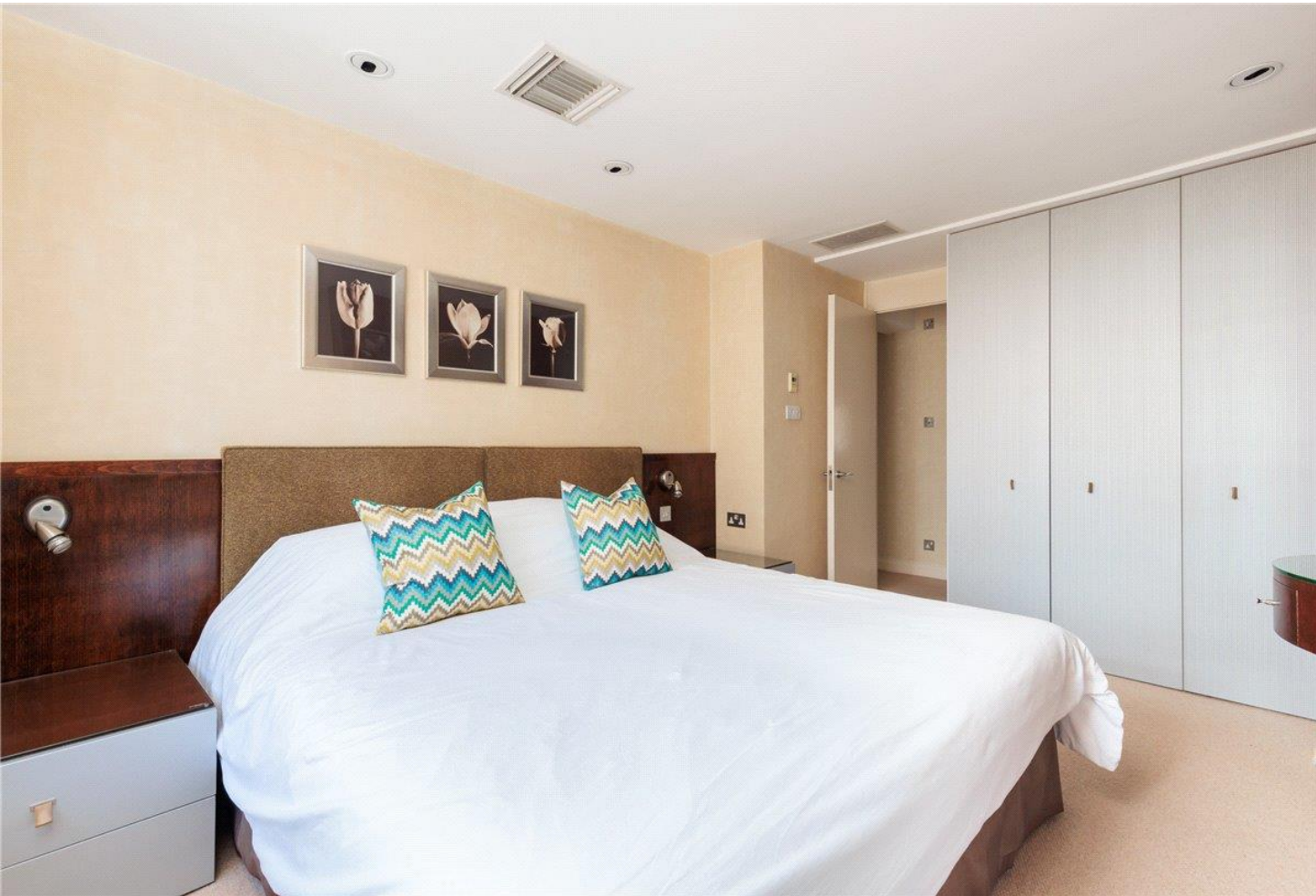
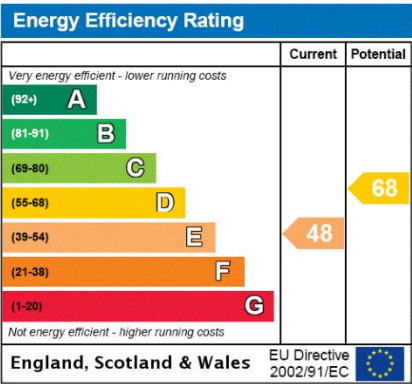


For eligibility for resident parking permits, please refer to the <https://www.westminster.gov.uk/parking> website for further details.

St Christopher's Place London, located near Oxford Street and a 1-minute walk away from Bond Street station, is an excellent alternative for both business and pleasure travellers. It has long been a beloved location among Londoners and is nestled between Oxford Street and Marylebone. As a social hub, St Christopher's Place provides various amenities, such as morning coffee stops, outdoor all-day dining, high street favourites, and independent brands.

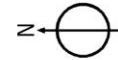
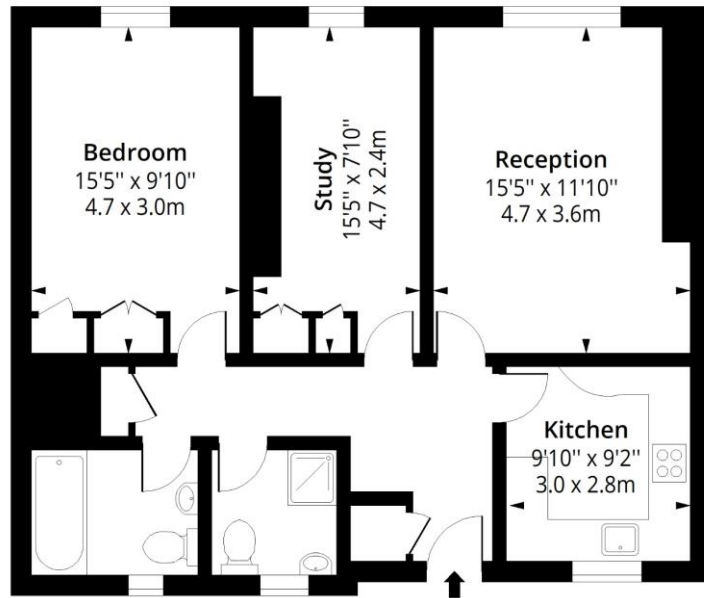
## ADDITIONAL INFORMATION

Offers	Available for a minimum term of 12 months longer terms will be considered
Viewing	Strictly by appointment
Local Authority	Westminster City Council - Council Tax Band G



# Greengarden House, W1U

Approx. Gross Internal Area 797 Sq Ft - 74.04 Sq M



## Fourth Floor

Floor Area 797 Sq Ft - 74.04 Sq M



Measured according to RICS IPMS2. Floor plan is for illustrative purposes only and is not to scale. Every attempt has been made to ensure the accuracy of the floor plan shown, however all measurements, fixtures, fittings and data shown are an approximate interpretation for illustrative purposes only. 1 sq m = 10.76 sq feet.

lpaplus.com

Date: 11/12/2023

T: 020 7486 8866

37 New Cavendish Street, London, W1G 9TL

E: marylebone@carterjonas.co.uk

A member of



Exclusive UK affiliate of

**CHRISTIE'S**  
INTERNATIONAL REAL ESTATE

Classification L2 - Business Data



### IMPORTANT INFORMATION

These particulars are for general information purposes only and do not represent an offer or contract or part of one. Carter Jonas or anyone in their employment has made every attempt to ensure that the particulars and other information provided are as accurate as possible and they are not intended to amount to advice on which you should rely as being factually accurate. Full information which may be relevant to your decision regarding the property can be found on the property listing on [carterjonas.co.uk](http://carterjonas.co.uk) or a separately available material information sheet, and we would advise you to confirm the details of any material information prior to any offer being submitted. You should not assume that the property has all necessary planning, building regulations or other consents and Carter Jonas has not tested any services, facilities, or equipment. Any measurements and distances given are approximate only. Where Carter Jonas has been provided with a floorplan by a third party, we cannot guarantee that the floorplan has been measured in accordance with IPMS. Purchasers or prospective tenants must satisfy themselves of all of the aforementioned by independent inspection or otherwise. Our images only represent part of the property as it appeared at the time they were taken and do not represent the furnishings included; these are confirmed in a separate inventory. If you require further information, please contact us. \*Administration fees may apply depending on tenancy type. Please contact your local branch for this information.