



Botley Road
Oxford

Carter Jonas

67 BOTLEY ROAD OXFORD OX2 0BS

ground floor retail space with kitchen/prep area.
first and second floor flat with fitted kitchen, sitting room, 4 bedrooms, 2 shower rooms, open-plan courtyard to the rear

DESCRIPTION

A mid terraced three storey property situated on one of the main roads into the city centre, less than half a mile from the centre itself.

The building is currently divided into a ground floor commercial unit which provides an open plan retail space to the front with a kitchen/ preparation area and store.

The first and second floors have been refurbished to provide a very stylish four bedroom flat with two well fitted shower rooms, a well fitted kitchen and sitting room. The overall accommodation extends to approximately 2377 sq ft.

There is a small open plan courtyard to the rear which is accessed via a narrow entrance from Alexandra Road.

LOCATION

The Botley Road is one of the main routes into the City Centre with many residential side roads close by. It is within easy reach of colleges, restaurants, shops and businesses in the city centre less than half a mile away and is well located for the Oxford schools. In addition, nearby, there are lovely riverside walks to enjoy.

There are a number of employment locations in the area including Osney Mead as well as the retail parks running along the left hand side of the road as you leave Oxford.

A UNIQUE MIXED USE PROPERTY WITH COMMERCIAL ON THE GROUND FLOOR AND A STYLISH 4 BEDROOM FLAT OVER THE FIRST AND SECOND FLOORS LOCATED A SHORT DISTANCE FROM THE CITY CENTRE. TO BE SOLD WITH VACANT POSSESSION.



To be sold with vacant possession.

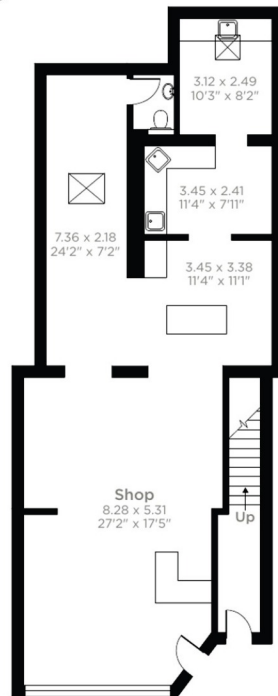
Freehold.

ADDITIONAL INFORMATION

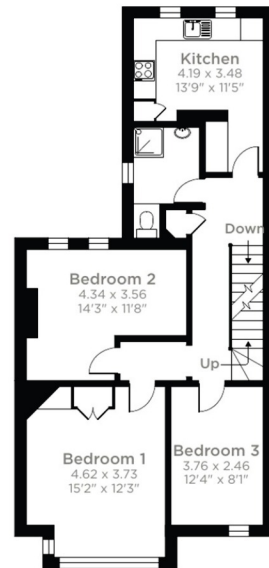
Viewing: Strictly by appointment through the selling agents Carter Jonas - T: 01865 511444

Directions: OX2 0BS

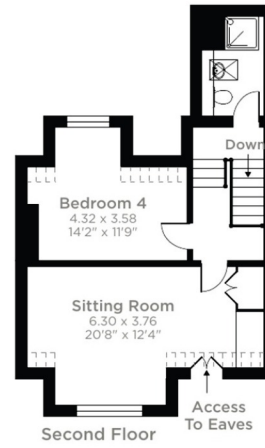




Ground Floor



First Floor



Second Floor

Botley Road, Oxford, OX2

Approximate Area = 2377 sq ft / 220.8 sq m

Limited Use Area(s) = 27 sq ft / 2.5 sq m

Total = 2404 sq ft / 223.3 sq m

For identification only - Not to scale

Denotes restricted
head height



Floor plan produced in accordance with RICS Property Measurement Standards incorporating International Property Measurement Standards (IPMS2 Residential). © nchecon 2023. Produced for Carter Jonas. REF: 1040287

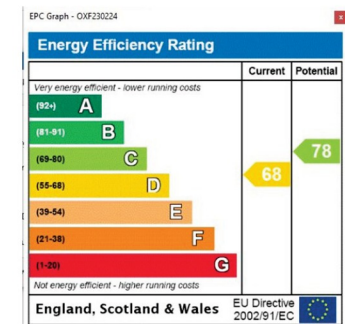
Oxford 01865 511444

oxford@carterjonas.co.uk

Mayfield House, 256 Banbury Road, Oxford. OX2 7DE

carterjonas.co.uk

Offices throughout the UK



IMPORTANT INFORMATION

Our property particulars do not represent an offer or contract, or part of one. The information given is without responsibility on the part of the agents, seller(s) or lessor(s) and you should not rely on the information as being factually accurate about the property, its condition or its value. Neither Carter Jonas LLP nor anyone in its employment or acting on its behalf has authority to make any representation or warranty in relation to this property. We have not carried out a detailed survey, nor tested the services, appliances or fittings at the property. The images shown may only represent part of the property and are as they appeared at the time of being photographed. The areas, measurements and distances are approximate only. Any reference to alterations or use does not mean that any necessary planning permission, building regulation or other consent has been obtained. The VAT position relating to the property may change without notice.