



**BURNTHWAITE ROAD, LONDON, SW6**  
£4,200 per month\*

**Carter Jonas**



# BURNTHWAITE ROAD, LONDON, SW6 5BG

A four bedroom family home located in close proximity to Fulham Broadway.  
EPC Rating E

- 4 Bedrooms
- 2 Bathrooms
- Patio garden & Roof terrace
- Unfurnished

## THE PROPERTY

This large period home comprises 3 double bedrooms, one single bedroom/study and a family shower room. The principal bedroom benefits from an ensuite bathroom and roof terrace.

On the ground floor, there is a double reception room leading to an open plan kitchen diner and patio garden.

On the first floor, there are two double bedrooms, a single bedroom/study and a family bathroom.

The principal bedroom is located on the top floor which also benefits from an ensuite bathroom.

The property is unfurnished.

## LOCATION

Burnthwaite Road is a quiet residential road conveniently located off Dawes Road that has excellent bus links to central London. Fulham Broadway underground station (District Line) is located 0.4 miles away. Parsons Green is also nearby (0.4 miles) with many cafés, restaurants, bars and local amenities. Eel Brook Common is also located within half a mile.

Holding Deposit: 1 weeks rent

Security Deposit: 6 weeks rent

Council tax band: G

Minimum term: 12 months





**OUTSIDE**

Patio garden & Roof terrace

**ADDITIONAL INFORMATION**

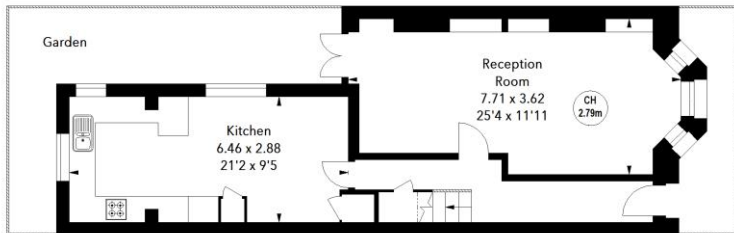
Offers	Available for a minimum term of 12 months longer terms will be considered
Viewing	Strictly by appointment
Local Authority	Hammersmith and Fulham - Council Tax Band G



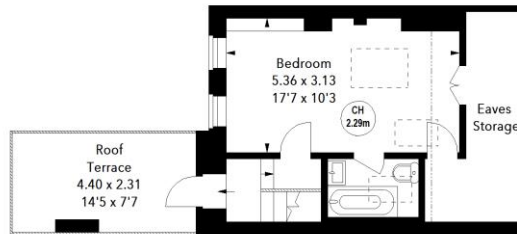
**Burnthwaite Road, SW6**  
 Approximate Area = 131.55 sq m / 1416 sq ft  
 (Including Eaves Storage)  
 Eaves Storage Area = 8.18 sq m / 88 sq ft



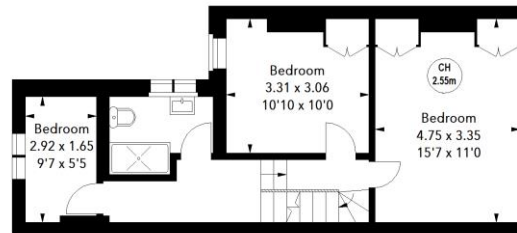
Key :  
 CH - Ceiling Height



**Ground Floor**  
 Approx. 52.77 sq m / 568 sq ft

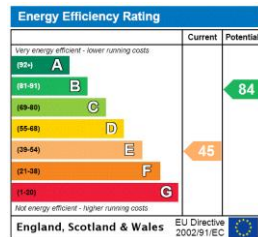


**Second Floor**  
 Approx. 33.35 sq m / 359 sq ft



**First Floor**  
 Approx. 45.43 sq m / 489 sq ft

The floor plan is not to scale and measurements and areas shown are approximate and therefore should be used for illustrative purposes only. The plan has been prepared in accordance with the RICS code of Measuring Practice and whilst we have confidence in the information produced, it must not be relied on. If there is any aspect of particular importance, you should carry out or commission your own inspection of the property.



**T: 020 7751 8898**

361 Fulham Palace Road, London, SW6 6TA

E: [parsonsgreen.residential.lettings@carterjonas.co.uk](mailto:parsonsgreen.residential.lettings@carterjonas.co.uk)



*Exclusive UK affiliate of*

**CHRISTIE'S**  
 INTERNATIONAL REAL ESTATE

Classification L2 - Business Data

### IMPORTANT INFORMATION

These particulars are for general information purposes only and do not represent an offer or contract or part of one. Carter Jonas or anyone in their employment has made every attempt to ensure that the particulars and other information provided are as accurate as possible and they are not intended to amount to advice on which you should rely as being factually accurate. Full information which may be relevant to your decision regarding the property can be found on the property listing on [carterjonas.co.uk](http://carterjonas.co.uk) or a separately available material information sheet, and we would advise you to confirm the details of any material information prior to any offer being submitted. You should not assume that the property has all necessary planning, building regulations or other consents and Carter Jonas has not tested any services, facilities, or equipment. Any measurements and distances given are approximate only. Where Carter Jonas has been provided with a floorplan by a third party, we cannot guarantee that the floorplan has been measured in accordance with IPMS. Purchasers or prospective tenants must satisfy themselves of all of the aforementioned by independent inspection or otherwise. Our images only represent part of the property as it appeared at the time they were taken and do not represent the furnishings included; these are confirmed in a separate inventory. If you require further information, please contact us. \*Administration fees may apply depending on tenancy type. Please contact your local branch for this information.