



ELLERTON ROAD, LONDON, SW18
£1,795,000

Carter Jonas

ELLERTON ROAD, LONDON, SW18

A stunning five-bedroom family house with large garden in the heart of the Magdalen Conservation Area house, close to Wandsworth Common and Earlsfield and Wandsworth Common Stations.

With approximately 2,515 square feet of well-balanced and well-presented living and entertaining space, this house manages to retain its Edwardian character and period features whilst embracing modern living and entertaining. The bright open plan kitchen/dining room, with bespoke solid cherry wood cabinetry, underfloor heating has bi-folding doors that give access to the garden. The spacious double reception room spans the length of the house, with glass doors leading to the kitchen and the original Edwardian parquet floor. There is a W.C. on the ground floor and steps leading down to the cellar.

The large, 50'5 ft garden has been well-maintained and is lawned and planted with a variety of shrubs and trees. The property benefits from several solar panels, installed on the south-facing roof.

The first floor has three well-proportioned double bedrooms and a smaller bedroom/study, all served by a large family bathroom. The principal suite can be found on the second floor, with an en suite shower room, plenty of wardrobe space and eaves storage.

Ellerton Road is a popular residential road close to Wandsworth Common and to the shops, cafes, bars and restaurants of Bellevue Road, Earlsfield's Garratt Lane, and Battersea's Northcote Road. There are many fantastic primary, prep and senior schools in both the state and independent sector. The house is in the Beatrix Potter Primary School Priority catchment. There are great sporting clubs and facilities close by, including Magdalen Park Lawn Tennis Club, Battersea Ironside Cricket & Rugby, The Spencer Club, Broomwood F.C.

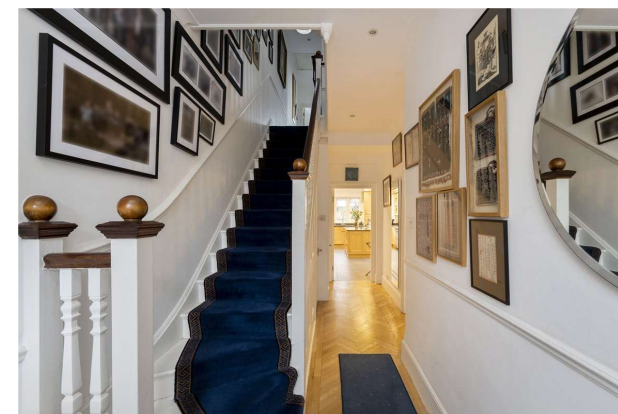
AMENITIES

- Large Edwardian House
- Five Bedrooms
- Open-Plan Kitchen/Diner
- Double Reception Room
- Original Features
- Cellar
- Large Garden
- Close to Wandsworth Common
- Close to train stations Wandsworth Common and Earlsfield
- Beatrix Potter Catchment Area
- Freehold

TENURE Freehold

LOCAL AUTHORITY London Borough Of Wandsworth

EPC BAND C



Classification L2 - Business Data



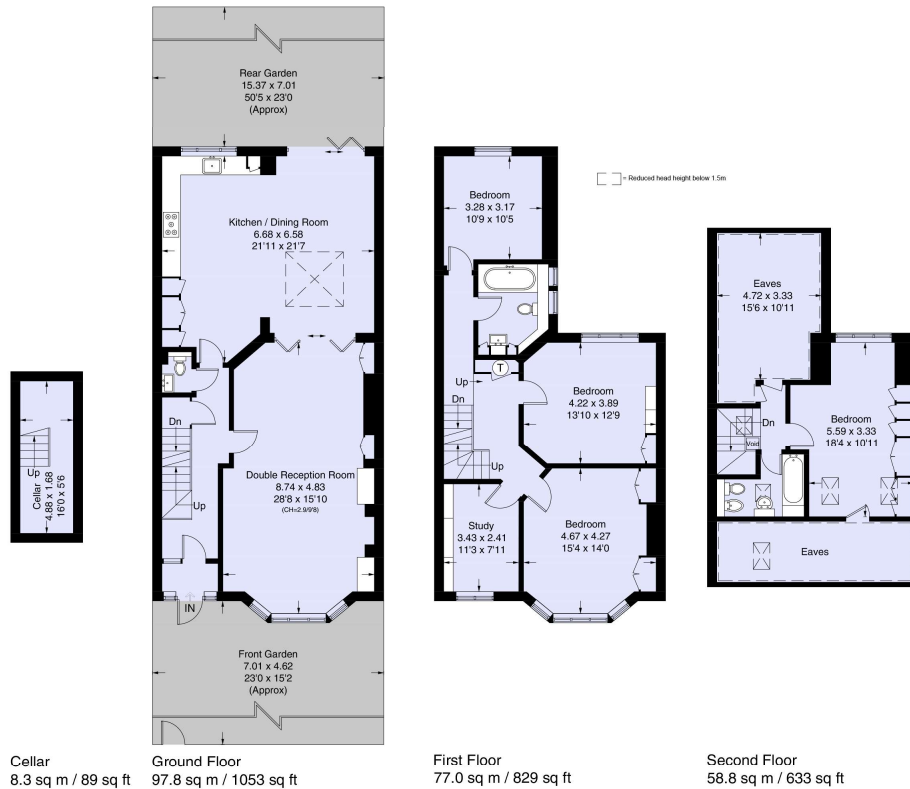
Ellerton Road, SW17

Approximate Floor Area = 233.6 sq m / 2515 sq ft

Cellar = 8.3 sq m / 89 sq ft

Total = 241.9 sq m / 2604 sq ft

Including Limited Use Area (30.9 sq m / 333 sq ft)



This marketing plan is for layout guidance only. Not drawn to scale unless stated. Windows and door openings are approximate. Whilst every care is taken in the preparation of this plan, please check all dimensions, shapes and compass bearings before making any decisions reliant upon them.

Carter Jonas

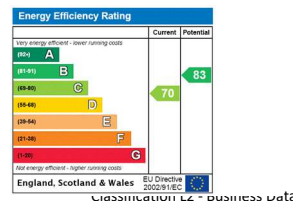
Exclusive UK affiliate of
CHRISTIE'S
INTERNATIONAL REAL ESTATE



Wandsworth Sales 020 8767 7711

wandsworth@carterjonas.co.uk
19 Bellevue Road, London, SW17 7EG

carterjonas.co.uk
Offices throughout the UK



IMPORTANT INFORMATION

These particulars are for general information purposes only and do not represent an offer of contract or part of one. Carter Jonas has made every attempt to ensure that the particulars and other information provided are as accurate as possible and are not intended to amount to advice on which you should rely as being factually accurate. You should not assume that the property has all necessary planning, building regulations or other consents and Carter Jonas have not tested any services, facilities or equipment. Any measurements and distances given are approximate only. Purchasers must satisfy themselves of all of the aforementioned by independent inspection or otherwise. Although we make reasonable efforts to update our information, neither Carter Jonas LLP nor anyone in its employment or acting on its behalf makes any representations warranties or guarantees, whether express or implied, in relation to the property, or that the content in these particulars is accurate, complete or up to date. Our images only represent part of the property as it appeared at the time they were taken. If you require further information please contact us.