



**4 OAKLAND AVENUE, YORK**  
Guide Price £475,000

**Carter Jonas**



## 4 OAKLAND AVENUE, YORK, YO31 1BY

Oakland Avenue is located in the Heworth area of York, a leafy suburb popular for its village feel and amenities, with easy access to the city centre. A traditional 1930s semi-detached house, number 4 has been carefully renovated to restore and preserve its original charm.

The accommodation offers nicely proportioned rooms with high ceilings and characterful features, tastefully decorated with attention to detail. A fabulous extension to the rear, with full-height picture windows and a pitched ceiling, creates free-flowing living space which opens out onto the garden. The kitchen features stylish fitted units and terracotta tiles, a useful pantry, and leads off to a utility area with side access.

South facing, natural light is abundant throughout. Upstairs, there are 3 double bedrooms and a house bathroom with a separate wc.

The rear garden has been beautifully landscaped with cleverly positioned seating terraces in which to catch the sun. A selection of small trees, including a wisteria, line the borders, adding to the privacy already enjoyed by the property's position on the road.

To the front of the house, a paved and gravelled driveway provides parking for 2 vehicles, alongside a garage for storage.

Situated in a Conservation Area, east of York and boasting an excellent range of local shops on East Parade, including a post office, coffee shops and mini supermarkets. The property has been sensitively refurbished and benefits from a lovely garden and off-street parking. The property is just a short walk away from the city centre and all the facilities York has to offer.

**TENURE** Freehold

**EPC BAND** To be confirmed

**A BEAUTIFULLY RENOVATED AND EXTENDED 1930S SEMI-DETACHED HOUSE WITH A PRETTY GARDEN, PEACEFULLY SITUATED IN HEWORTH.**





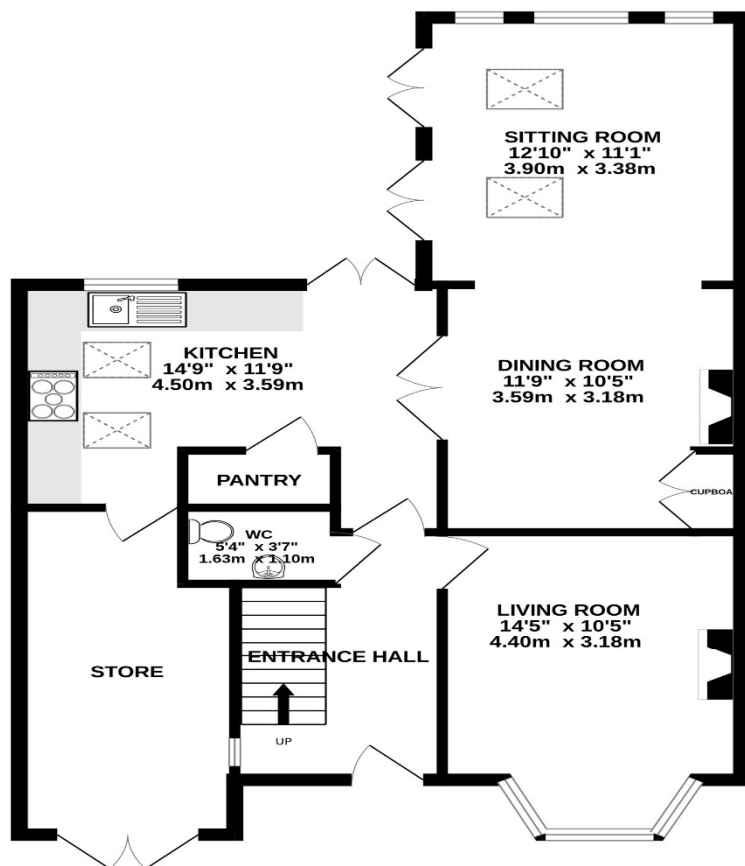




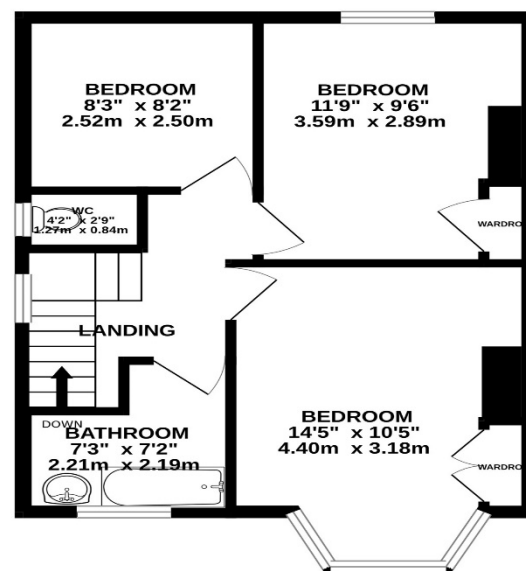




GROUND FLOOR  
762 sq.ft. (70.8 sq.m.) approx.



1ST FLOOR  
423 sq.ft. (39.3 sq.m.) approx.



TOTAL FLOOR AREA : 1185 sq.ft. (110.1 sq.m.) approx.

Whilst every attempt has been made to ensure the accuracy of the floorplan contained here, measurements of doors, windows, rooms and any other items are approximate and no responsibility is taken for any error, omission or mis-statement. This plan is for illustrative purposes only and should be used as such by any prospective purchaser. The services, systems and appliances shown have not been tested and no guarantee as to their operability or efficiency can be given.  
Made with Metropix ©2023

York 01904 558200

york@carterjonas.co.uk  
82 Micklegate, York, YO1 6LF

carterjonas.co.uk  
Offices throughout the UK

Exclusive UK affiliate of

**CHRISTIE'S**  
INTERNATIONAL REAL ESTATE

#### IMPORTANT INFORMATION

These particulars are for general information purposes only and do not represent an offer of contract or part of one. Carter Jonas has made every attempt to ensure that the particulars and other information provided are as accurate as possible and are not intended to amount to advice on which you should rely as being factually accurate. You should not assume that the property has all necessary planning, building regulations or other consents and Carter Jonas have not tested any services, facilities or equipment. Any measurements and distances given are approximate only. Purchasers must satisfy themselves of all of the aforementioned by independent inspection or otherwise. Although we make reasonable efforts to update our information, neither Carter Jonas LLP nor anyone in its employment or acting on its behalf makes any representations warranties or guarantees, whether express or implied, in relation to the property, or that the content in these particulars is accurate, complete or up to date. Our images only represent part of the property as it appeared at the time they were taken. If you require further information please contact us.