



**9 MAIN STREET, GRISTHORPE**  
£900,000

**Carter Jonas**



# MAIN STREET, GRISTHORPE, YO14 9PP

This captivating manor house, a cornerstone of the idyllic Gristhorpe village, beckons you to step into a world of history and tranquillity. Built in the early 18th century, and extended at various points in its past, the property exudes grandeur while retaining its original charm. Unbound by listed status, it presents a rare opportunity, all set in a sprawling 2.5-acre estate offering a world of your own.

Enjoy the peaceful village life of Gristhorpe yet remain just 5 minutes from Filey - brimming with amenities. Wake up to breathtaking views stretching over rolling farmlands. Step outside and explore your verdant sanctuary.

Wander through mature lawns with vibrant herbaceous borders that burst with colour throughout the summer, meticulously maintained by the current owners.

A grand entrance with an impressive, hand-crafted encaustic tiled floor welcomes you in. Entertain in style in the large, triple-aspect lounge featuring a charming bay window and a classic original fireplace. Unwind in the spacious farmhouse kitchen boasting ample storage and a delightful fireplace recess, the heart of the home. With three large reception rooms to utilise, there is enviable flexibility.

Three undeveloped attic spaces offer possibilities for additional bedrooms, a home office, or creative studio. A separate utility room and boot room help to keep the main house pristine.

This remarkable estate presents a once-in-a-lifetime opportunity to own a piece of history. Embrace a life of grandeur amidst breathtaking scenery - contact us today to schedule a viewing and begin your next chapter.

**TENURE** Freehold

**LOCAL AUTHORITY** North Yorkshire Council

**EPC BAND F COUNCIL TAX BAND G**

CAPTIVATING MANOR HOUSE SET IN 2.5 ACRES, IN THE QUIET VILLAGE OF GRISTHORPE, JUST A SHORT DRIVE FROM FILEY AND THE COAST.







Classification L2 - Business Data





Classification L2 - Business Data

# 9, Main Street, Gristhorpe, Filey, North Yorkshire YO14 9PP

Approximate Gross Internal Floor Area = 572.3 sq m / 6161 sq ft

Ground Floor Area = 287.6 sq m / 3096 sq ft

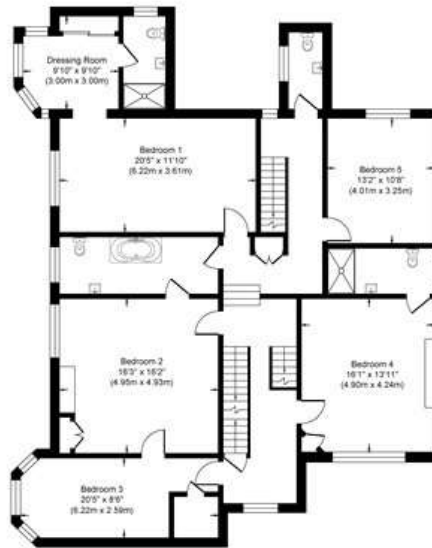
First Floor Area = 164.7 sq m / 1773 sq ft

Second Floor 1 Area = 71.5 sq m / 770 sq ft

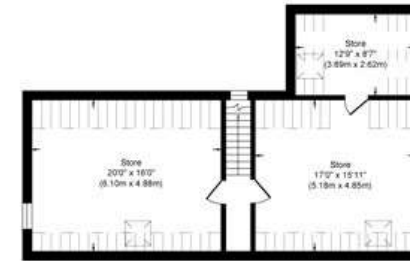
Second Floor 2 Area = 48.4 sq m / 522 sq ft



Ground Floor



First Floor

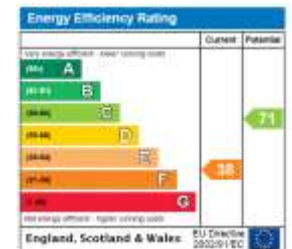


Second Floor 1



Second Floor 2

Illustration for identification purposes only, measurements are approximate, not to scale.



York 01904 558200

york@carterjonas.co.uk  
82 Micklegate, York, YO1 6LF

carterjonas.co.uk  
Offices throughout the UK

Exclusive UK affiliate of  
**CHRISTIE'S**  
INTERNATIONAL REAL ESTATE

## IMPORTANT INFORMATION

These particulars are for general information purposes only and do not represent an offer of contract or part of one. Carter Jonas has made every attempt to ensure that the particulars and other information provided are as accurate as possible and are not intended to amount to advice on which you should rely as being factually accurate. You should not assume that the property has all necessary planning, building regulations or other consents and Carter Jonas have not tested any services, facilities or equipment. Any measurements and distances given are approximate only. Purchasers must satisfy themselves of all of the aforementioned by independent inspection or otherwise. Although we make reasonable efforts to update our information, neither Carter Jonas LLP nor anyone in its employment or acting on its behalf makes any representations warranties or guarantees, whether express or implied, in relation to the property, or that the content in these particulars is accurate, complete or up to date. Our images only represent part of the property as it appeared at the time they were taken. If you require further information please contact us.

Classification L2 - Business Data