



9 SANDSEND COURT, THE PARADE, SANDSEND, WHITBY
Guide Price £550,000

Carter Jonas

9 SANDSEND COURT, THE PARADE, SANDSEND, WHITBY, YO21 3TD

Sandsend Court is a prominent Victorian building positioned directly opposite Sandsend beach, right in the heart of this desirable coastal village. Originally built as a hotel to accommodate the wave of tourism brought to the area by George Hudson's new railway lines, it was converted to apartments in the 1960s.

Apartment 9 is one of the largest in the building at over 1300 square feet and occupies the western end, with triple aspect windows affording fabulous views from every aspect and plenty of natural light. The property was extensively renovated approximately 10 years ago, including roof repairs, high levels of insulation and soundproofing, a full rewire and new plumbing, timber treatment and new double-glazed windows installed throughout.

At this time, the layout was also cleverly reconfigured to suit modern-day lifestyles, providing wonderfully bright, open plan living and dining areas surrounding a fitted kitchen with breakfast bar, and an office/separate lounge which could also serve as an occasional bedroom. If required, an enclosed third bedroom could easily be reinstated in this space. The 2 bedrooms are both good-sized doubles and are served by 2 bathrooms, and there are several fitted cupboards providing excellent storage space. Optimising the sea-front position, all of the principal rooms orient to the front, enjoying picture perfect coastal views.

The apartment benefits from being owned as freehold, with the shared communal areas of the building bound by a lease which restricts holiday lets. The property's generous size lends itself well to being a full-time residence; it would equally make an ideal low-maintenance second home.

Sandsend is a beautifully unspoiled coastal village with a large expanse of sandy beach and stunning scenery. Home to the AA rosette restaurant Estbek House, and with excellent further amenities locally including a pub, this pretty fishing village is a real gem, with easy access to the best eateries and amenities on your doorstep. A wide variety of shops, restaurants and bars are available in nearby Whitby, with the North York Moors and transport links on the doorstep.

TENURE Commonhold **EPC BAND** C **COUNCIL TAX BAND** D

A SUPERB 2/3 BEDROOM SEAFRONT APARTMENT BOASTING SPECTACULAR VIEWS ACROSS THE YORKSHIRE HERITAGE COASTLINE AND SANDSEND VALLEY.





Classification L2 - Business Data



Classification L2 - Business Data

9 Sandsend Court

Approximate Gross Internal Floor Area = 122.1 sq m / 1315 sq ft

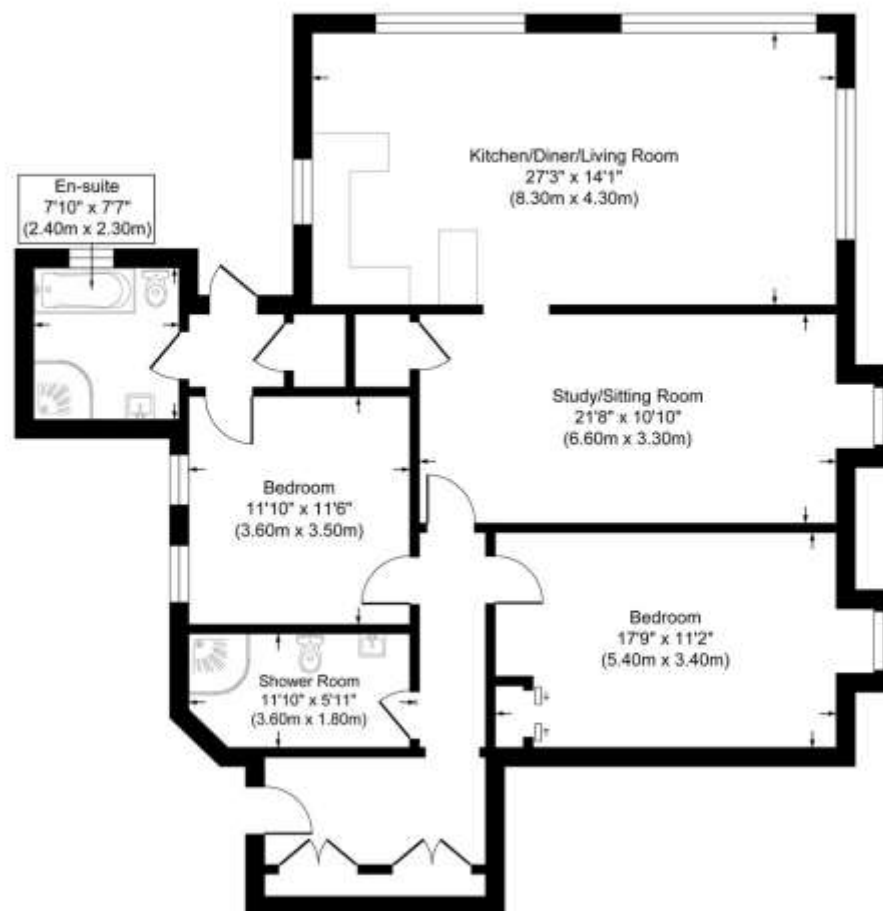
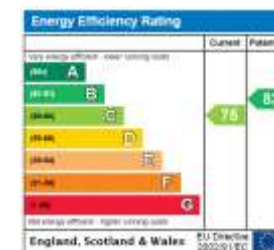


Illustration for identification purposes only, measurements are approximate, not to scale.



York 01904 558200

york@carterjonas.co.uk
82 Micklegate, York, YO1 6LF

carterjonas.co.uk
Offices throughout the UK

Exclusive UK affiliate of
CHRISTIE'S
INTERNATIONAL REAL ESTATE

Classification L2 - Business Data

IMPORTANT INFORMATION

These particulars are for general information purposes only and do not represent an offer of contract or part of one. Carter Jonas has made every attempt to ensure that the particulars and other information provided are as accurate as possible and are not intended to amount to advice on which you should rely as being factually accurate. You should not assume that the property has all necessary planning, building regulations or other consents and Carter Jonas have not tested any services, facilities or equipment. Any measurements and distances given are approximate only. Purchasers must satisfy themselves of all of the aforementioned by independent inspection or otherwise. Although we make reasonable efforts to update our information, neither Carter Jonas LLP nor anyone in its employment or acting on its behalf makes any representations warranties or guarantees, whether express or implied, in relation to the property, or that the content in these particulars is accurate, complete or up to date. Our images only represent part of the property as it appeared at the time they were taken. If you require further information please contact us.